


**OR**

**Databases**


THE MOST AWESOME-EST,  
EXCITING, BREATHTAKING, RIP-  
ROARING, NOT-BORING TALK OF  
THE ENTIRE WEEK!!!!

Wildlife Rehabilitation Center of Minnesota  
info@wrcmn.org



## Databases & Standardized Terminology


- Why should you care???




## Juvenile Rabbits

A DATABASE  
&  
STANDARDIZED TERMINOLOGY!!!

- Cat brought home
- Grrrrrrr ....
  - They always die
- Wouldn't it be nice if we could find out why?
  - Why?




all the info in this database you used....




## Electronic Databases

- Allows for **fast** input of finder, donor and patient information
- Allows for **fast** searching of any/all/some information
- Allows for **fast** reporting
  - Year end report to state/USFW
  - Endangered species reporting
  - Automatic emails sent/forms printed/etc



## Standardized Terminology


- Is amazing!




## Standardized Terminology-3 areas

(created by the Clinical Wildlife Health Initiative)

- **Circumstances of Admission**
  - Why did the finder bring me this animal?
- **Clinical Signs** (aka anatomical site of injury)
  - What are the abnormal physical exam findings sorted by body system?
- **Diagnosis** (aka categorization of injury)
  - What CAUSED the abnormal physical exam findings?



## Why??

- Only way to compile your/our data and make a difference!!
  - How many rabbits are attacked by cats and brought in every year to wildlife rehabilitators?
  - How many lead poisoned animals do wildlife rehabilitators see every year?
  - What percentage of your total animals were injured due to human activity?
  - What antibiotic resulted in the most survival of cat attack cottontails that you see each year?
  - How many animals do rehabilitators see each year???????????



## But I already record that data!

- What would you put down on your DNR report for the cat attacked rabbit? (write it down)
- What would you put down on your fed report for the lead poisoned bald eagle? (write it down)
- How long would it take you to figure out which antibiotic resulted in the most cat attack rabbit releases? (write it down)



## Cases



## Eastern Cottontail

- Finder's cat brought the rabbit to its owner



## Eastern Cottontail

- Circumstances of Admission:
- Clinical Signs:
- Diagnosis:



## Eastern Cottontail

- Circumstances of Admission?



## Circumstances of Admission

- Animal interaction
- Collision
- Electrocution
- Gas flare
- Entrapment
- Environment
- Nest/habitat destruction
- Behavioral stranding
- Orphan
- Inappropriate human possession
- Projectile
- Failure to thrive/maladaptation
- Undetermined
- Dead on arrival
- Referral
- Confiscation



## Circumstances of Admission

- **Animal interaction**
- Collision
- Electrocution
- Gas flare
- Entrapment
- Environment
- Nest/habitat destruction
- Behavioral stranding
- Orphan
- Inappropriate human possession
- Projectile
- Failure to thrive/maladaptation
- Undetermined
- Dead on arrival
- Referral
- Confiscation



## Circumstances of Admission

- **Animal interaction:**
  - Domestic
    - Cat
    - Dog
  - Non-domestic
    - Same species
    - Different species



## Circumstances of Admission

- **Animal interaction:** Contact with another animal lead directly or indirectly to the wildlife patient being admitted to a rehabilitation facility.
  - **Domestic:** A form of animal interaction where wildlife had either direct or indirect contact with one or more of a variety of animals that have been tamed and made fit for a human environment. This term includes animals that were domesticated as a species but may now be feral.
    - **Cat:** Wildlife injury caused by a domesticated cat. May be feral
    - **Dog:** Wildlife injury caused by a domesticated dog. May be feral
  - **Non-domestic:** A form of animal interaction where wildlife had either direct or indirect contact with an animal not made tame or fit for a human environment.
    - **Same species:** Wildlife injury caused by a non-domesticated animal of the same species
    - **Different species:** Wildlife injury caused by a non-don different species. This may also include wild yet non-n pets (ex. escaped boa constrictors, roaming Serval cat



## Eastern Cottontail

- **Circumstances of Admission:**
  - Animal interaction → domestic species → cat
- **Clinical Signs:**
- **Diagnosis:**



## But wait...

- Now the finder is telling you this happened **LAST WEEK** and she's been caring for the rabbit since then



## Circumstances of Admission

- **Animal interaction**
- Collision
- Electrocution
- Gas flare
- Entrapment
- Environment
- Nest/habitat destruction
- Behavioral stranding
- Orphan
- Inappropriate human possession
- Projectile
- Failure to thrive/maladaptation
- Undetermined
- Dead on arrival
- Referral
- Confiscation



## Circumstances of Admission

- **Animal interaction**
- Collision
- Electrocution
- Gas flare
- Entrapment
- Environment
- Nest/habitat destruction
- Behavioral stranding
- Orphan
- **Inappropriate human possession**
- Projectile
- Failure to thrive/maladaptation
- Undetermined
- Dead on arrival
- Referral
- Confiscation



## Circumstances of Admission

- **Inappropriate Human Possession** – A circumstance where an animal of any age is inappropriately removed from its natural habitat and is in human possession due to either i) perceived risk by the rescuer, ii) to be kept as a pet, or iii) to be treated for injuries by a person lacking appropriate training, authorization, or assistance.
  - **Abduction with intent of rescue** – Any animal that is brought for rehabilitation with the intent of rescue, that has been removed from its natural habitat without warrant due to either i) perceived risk to the animal by the rescuer, ii) disregard or ignorance of the animal's natural history, or iii) when no attempt or an inappropriate attempt has been made to reunite a young animal with its parents. This term replaces the traditional "kidnapped".
  - **Pet** – Any animal inappropriately removed from its natural habitat and kept and cared for by a human as a "pet".
  - **Unauthorized or Untrained Rehabilitation** - Any injured animal removed from its natural habitat and kept and treated by a pet appropriate training, authorization, or assistance with rehabilitation aid and with the intent of release (gen



## Eastern Cottontail

- **Circumstances of Admission:**
  - Animal interaction → domestic species → cat
  - Inappropriate human possession → unauthorized or untrained rehabilitation
- **Clinical Signs:**
- **Diagnosis:**



## What if...

- The finder rescued it from children who were kicking it?
- What if it had been run over by a lawnmower?
- What if the rabbit's nest had been in the middle of a construction site (the rest of the litter mates were killed ☹ )
- What if you noted a bullet on radiographs?



## Clinical Signs

- Auditory
- Cardiovascular
- Cavity
- Digestive system
- Integumentary
- Generalized
- Hematopoetic
- Musculoskeletal
- Nervous
- Ocular
- Respiratory
- Urogenital
- Clinically healthy
- Died before exam (includes DOA)



## Clinical Signs

- Auditory
- Cardiovascular
- Cavity
- Digestive system
- **Integumentary**
- Generalized
- Hematopoetic
- Musculoskeletal
- Nervous
- Ocular
- Respiratory
- Urogenital
- Clinically healthy
- Died before exam (includes DOA)



## Clinical Signs

- Auditory
- Cardiovascular
- Cavity
- Digestive system
- **Integumentary**
- **Generalized**
- Hematopoetic
- Musculoskeletal
- Nervous
- Ocular
- Respiratory
- Urogenital
- Clinically healthy
- Died before exam (includes DOA)



## Eastern Cottontail

- **Circumstances of Admission:**
  - Animal interaction → domestic species → cat
  - Inappropriate human possession → unauthorized or untrained rehabilitation
- **Clinical Signs:**
  - Integumentary
  - Generalized → lethargy
- **Diagnosis:**



## Diagnosis

- Clinically healthy
- Degenerative
- Developmental/congenital/inherited
- Autoimmune/allergy/immune-mediated
- Metabolic
- Physical injury
- Mental
- Neoplastic
- Nutritional
- Inflammatory
- Infectious
- Iatrogenic
- Idiopathic
- Toxicity
- Undetermined



## Diagnosis

- Clinically healthy
- Degenerative
- Developmental/congenital/inherited
- Autoimmune/allergy/immune-mediated
- Metabolic
- **Physical injury**
- Mental
- Neoplastic
- Nutritional
- Inflammatory
- Infectious
- Iatrogenic
- Idiopathic
- Toxicity
- Undetermined



## Eastern Cottontail

- **Circumstances of Admission:**
  - Animal interaction → domestic species → cat
  - Inappropriate human possession → unauthorized or untrained rehabilitation
- **Clinical Signs:**
  - Integumentary
- **Diagnosis:**
  - Physical injury → trauma



## Trumpeter Swan



## Trumpeter Swan

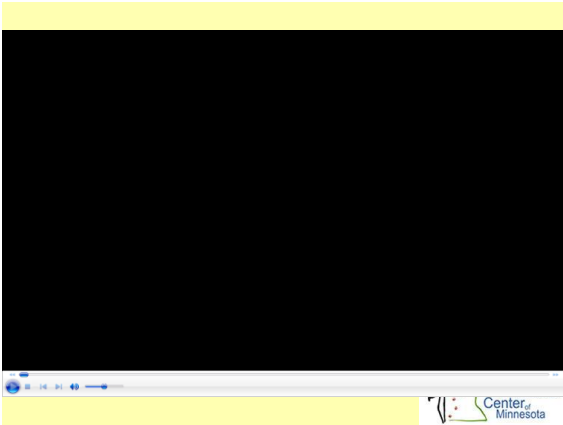
- Circumstances of Admission?
- Clinical Signs?
- Diagnosis?



Found last year



Nest blew down in the storm



Nest in a removed tree, kept for a month



## Databases

- WILD-ONe (free)
  - <http://wildlifecenter.org/training-opportunities/WILD-ONe>
- Wildlife Rehabilitation MD (free)
  - <https://wrmc.org/>
- RaptorMed (\$\$)
  - <http://www.raptormed.com/>



## Questions?

- renee@wrcmn.org

